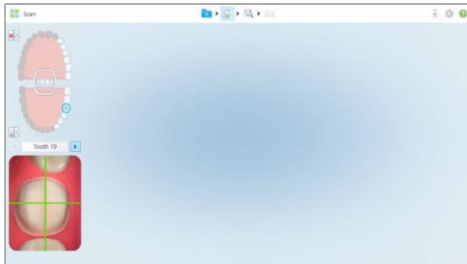


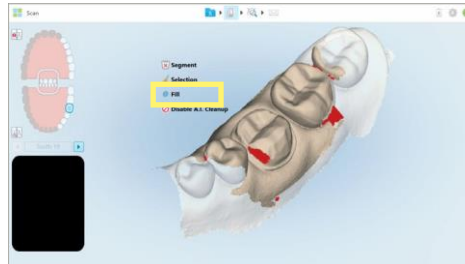
# Restorative scanning guide

## Step 1: Scan prep



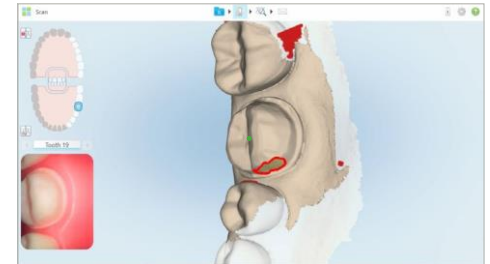
- Center the Prep
- Confirm margin line is **completely dry** and clearly visible, using proper tissue retraction
- Exaggerate wand angles to capture under margin
- 10 second scan to avoid over scanning

## Correcting voids



- Identify any voids on prep
- Use the **fill** tool to add scans to prep
- To activate **fill**, to and hold on screen for 2 seconds

## Correcting voids



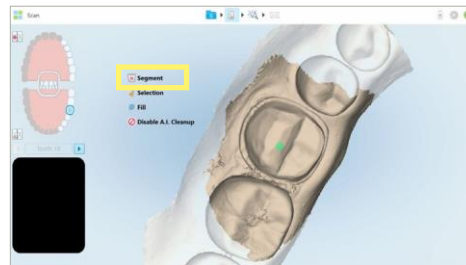
- Fill tool outlines voids in red
- Only anatomy outlined in red is captured when rescanning to fill void

## Correcting unclear margin



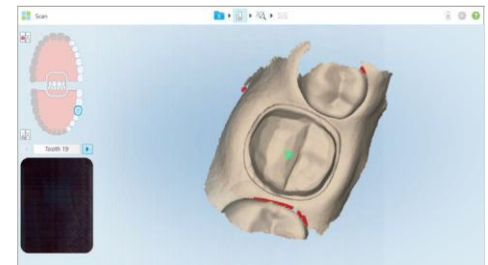
- In stone color look for
  - Rough patches
  - Unclear margins
- Note margin is distorted

## Correcting unclear margin



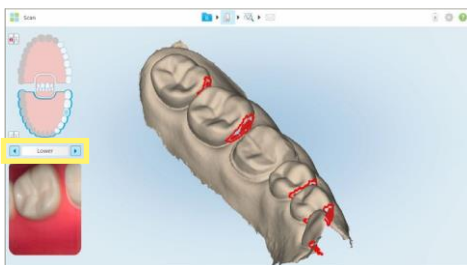
- Use **segment** tool to delete prep scan
- Dry, repack cord to clean prep before rescanning

## Corrected margin



- Rescan prep
- Confirm margin is visible
- Prep free of voids
- Center green dot
- Move to next segment

## Step 2: Scan prep arch



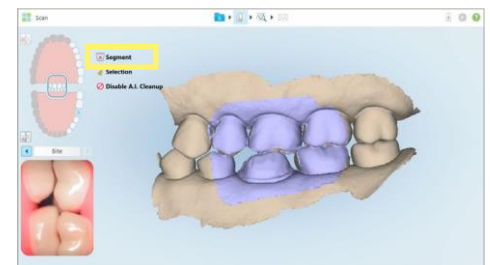
- Segment length is determined by Dr: quadrant, expanded or full arch
- Verify adjacent interproximal contacts
- Use **fill** to isolate missing contact to make adding contact scans easier

## Step 3: Scan opposing arch



- Follow same length of prep arch
- Scan occlusal, lingual, buccal
- Note scans can also be viewed in color by selecting colored tooth icon

## Step 4: Scan bite



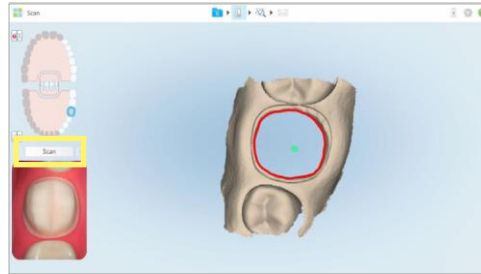
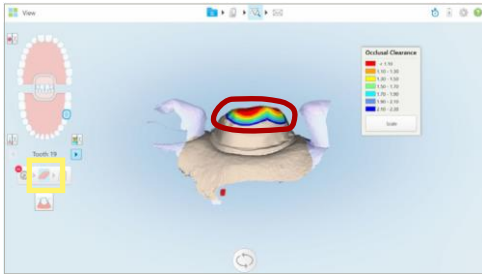
- Sit patient up for bite scan
- Have patient practice correct bite
- One bite per side if midline crossed
- Delete **Segment** to retake if patient opens

## Doctor reviews digital impressions before sending

### Five requirements for an acceptable prep scan

1. Bite in centric occlusion
2. Adequate occlusal clearance for selected material
3. Prep, confirm margin line
4. Adjacent Contacts
5. Digital die (prep segment) is separate in high definition

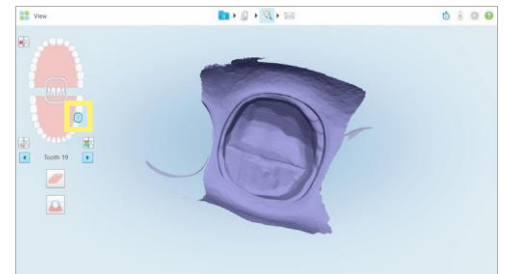
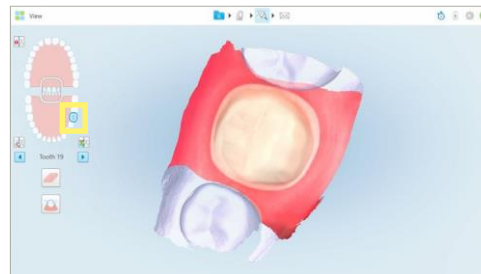
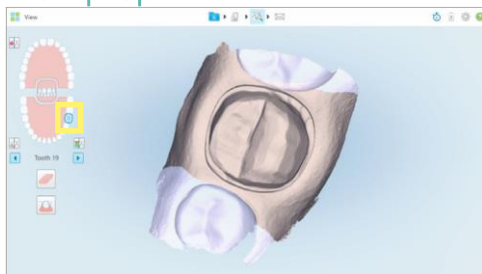
### Eraser tool



Use the eraser tool to edit margin or for occlusal reduction

1. Select prep tooth
2. Select **eraser**
3. Circle area
4. Adjust in Patient's mouth and rescan

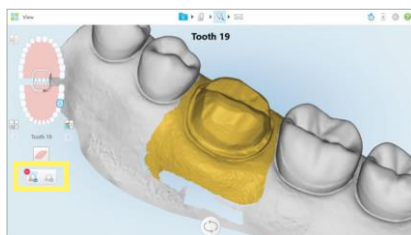
### View prep



View isolated prep in stone, color and negative view.

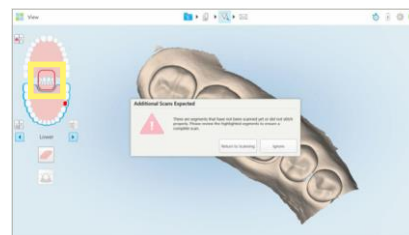
Correct unclear margin or voids using the eraser tool or rescanning the prep segment.

### Prep separation tool



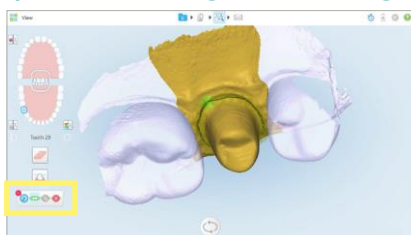
Add or subtract to redraw area  
Entire prep/margin should be highlighted in gold

### Error message



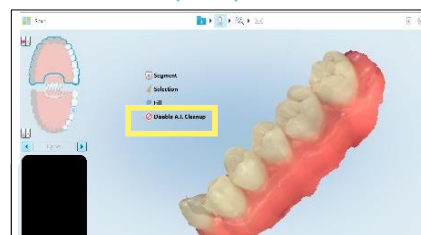
Do not send the case  
Return to scanning and scan the missing red segment.

### Optional margin marking tool



Automatic margin marking to verify margin or to mark deep or unclear margin for lab.

### Automatic (A.I.) excess material removal



Disable automatic A.I. cleanup when more anatomy is required on the model.